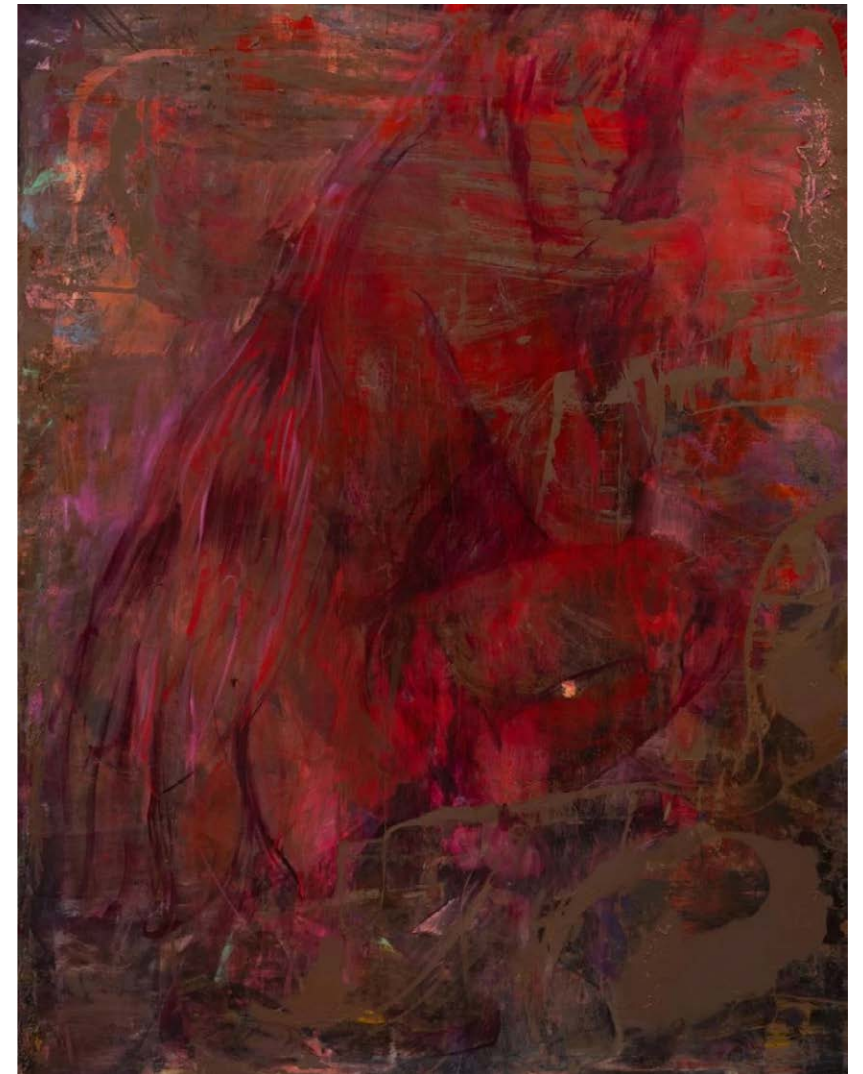


CAROLINE ABSHER

Caroline Absher paints with a sense of energy and ecstasy, allowing her compositions to unfold through instinct as much as intention. As her practice moves from figuration toward abstraction, forms emerge and dissolve fluidly, reflecting her sensitivity to emotional states, shifting atmospheres, and human experience. Rather than capturing a fixed moment, she aims to create a transcendental world, reminding us that our inner landscapes are always in motion, shaped by memory and experience. Her canvases feel open and expansive, with colours shifting, figures appearing and disappearing, and gestures that build atmospheric layers of emotion, often reflecting her years of travel and time spent in the outdoors.

Absher's recent paintings arise from a meditation practice she adopted to find calm amid global unrest and personal uncertainty. Through this practice, she began experiencing flashes of memory, visions, and intense emotional states, which she translated into near-abstract canvases mapping the conflicts of daily life. Drawing on the idea of the silver cord, a mythical link between body and soul, Absher incorporates ghostly, figural outlines that guide and mediate the mind's turbulence. Her works, roughly the size of a doorway, mark a departure from earlier representational paintings, inviting viewers to engage closely, discover hidden figures, and experience the tension between abstraction and emergent patterns. Ultimately, Absher's art reflects the mind's constant search for meaning, translating internal struggle into luminous, dynamic forms that balance beauty and darkness.





Caroline Absher
Scarlet (Earth), 2025
Oil on canvas
200 x 160 cm